

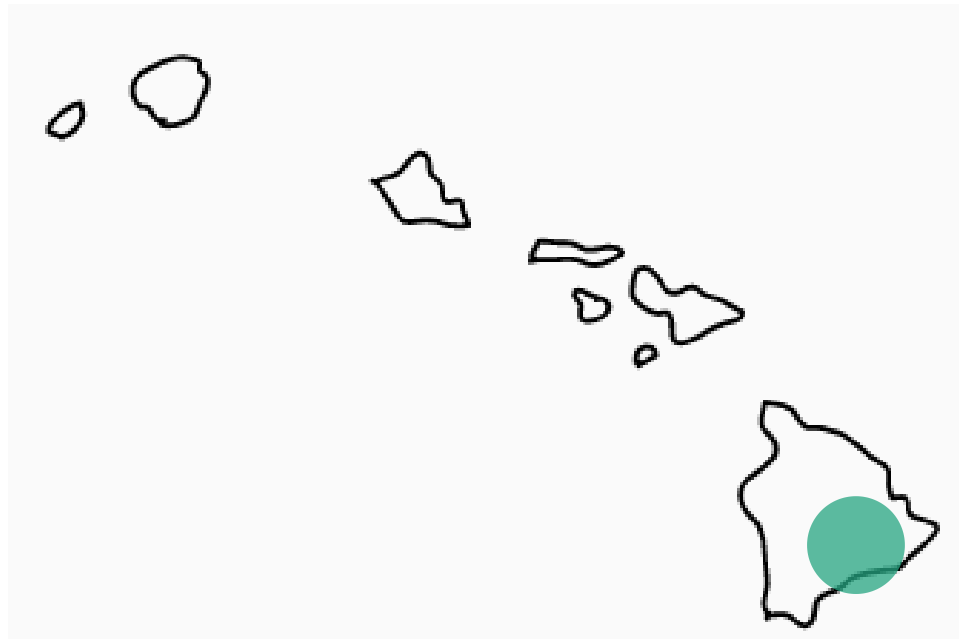
The background features a vibrant teal color with stylized palm fronds in various shades of green and dark green. A large, white, semi-transparent rectangular box is centered on the page, containing the title and author information. The title 'Loco in the Coco' is written in a large, dark green, sans-serif font. Below it, the author's name 'CARA HARLOW' and the course information 'THED 305 SHREVE SPRING 2021' are written in a smaller, dark green, sans-serif font.

# Loco in the Coco

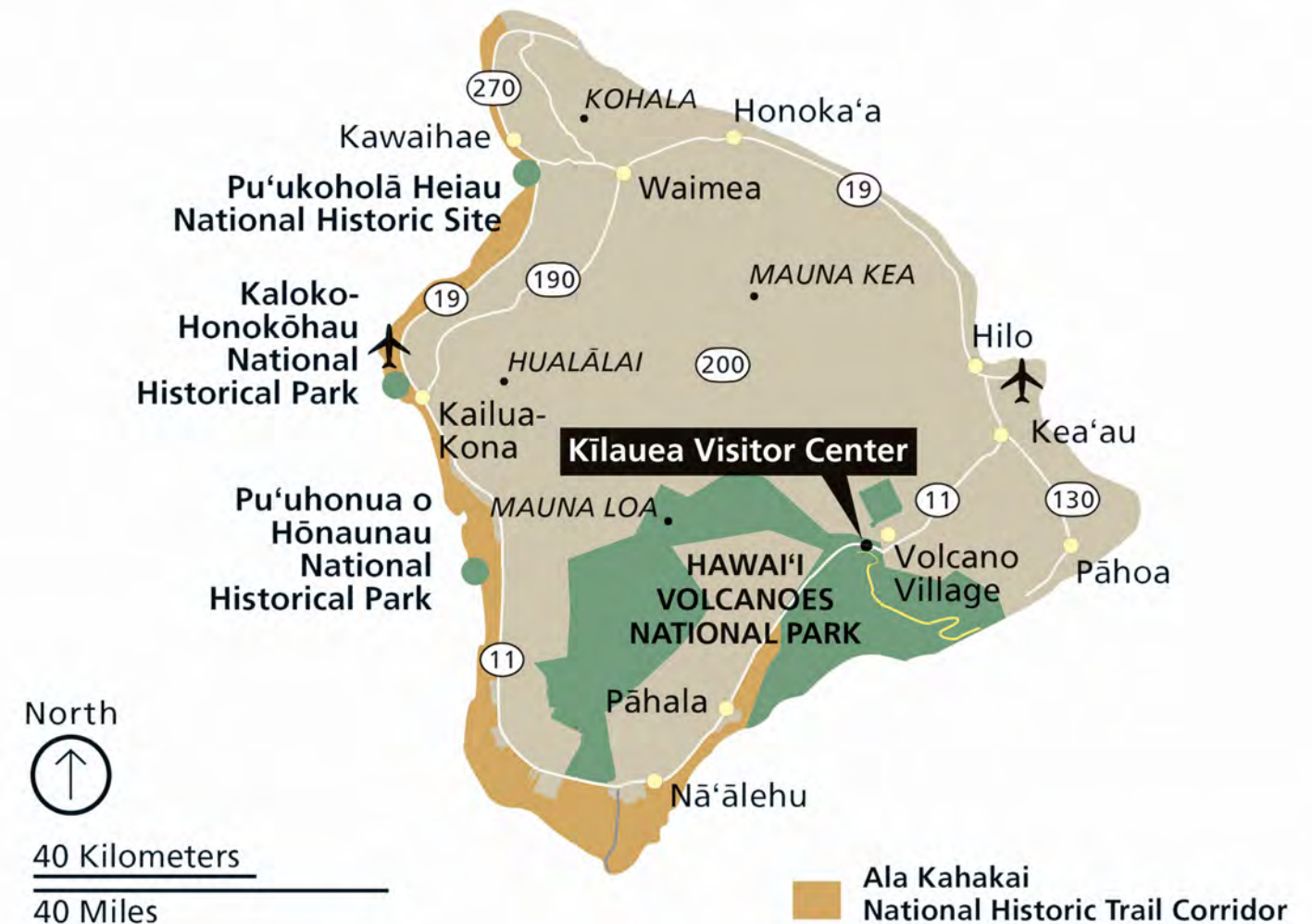
CARA HARLOW  
THED 305  
SHREVE  
SPRING 2021

# Location

HAWAII VOLCANOES NATIONAL PARK  
NEAR THE VISITOR'S CENTER  
ISLAND OF MAUI



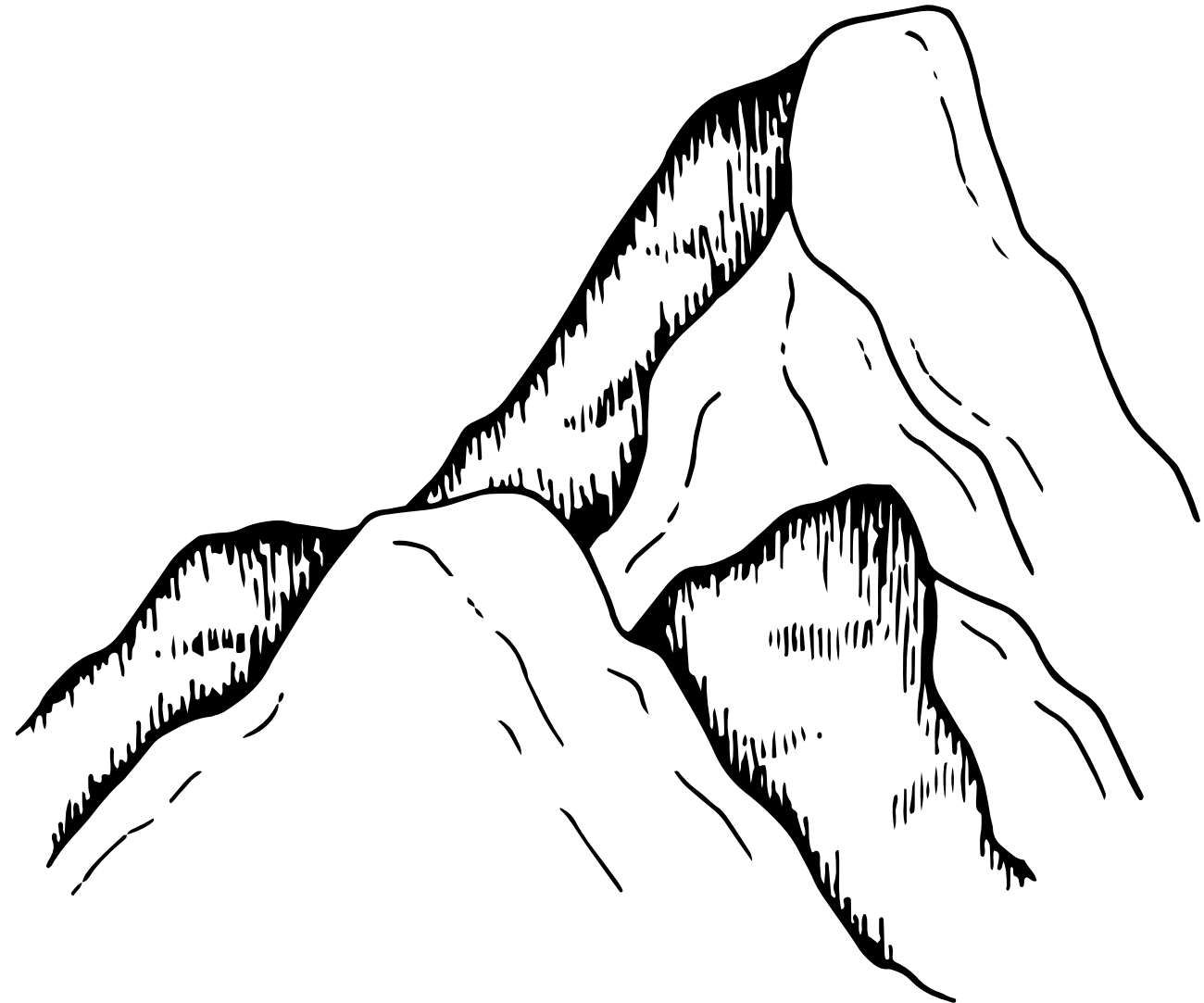
## National Parks on the Island of Hawai'i



# Story

BASED ON A HAWAIIAN MYTH

THE VOLCANO GODDESS PELE SENT HER SISTER HI'IAKA TO FIND HER LOVE, KNOWN AS A LOHI'AU. PELE GREW IMPATIENT WAITING FOR HI'IAKA TO FIND LOHI'AU AND BURNED HER SISTER'S FOREST TO THE GROUND OUT OF ANGER. THE TWO SISTERS CONTINUED TO FIGHT AND SEEK REVENGE ON EACH OTHER FOR THEIR ACTIONS, RESULTING IN THE DEATH OF LOHI'AU. THIS ONLY CONTINUED TO CAUSE THE CIRCUMSTANCES TO BECOME "LOCO IN THE COCO."



# The Experience

YOU ARE TIRED AND COVERED IN SWEAT. YOU HAVE BEEN EXPLORING THE HAWAII VOLCANOES NATION PARK WITH FRIENDS, FAMILY, OR SIMPLY ENJOYING A HIKE BY YOURSELF. JUST WHEN YOU THINK YOU CAN'T MAKE THE DRIVE TO THE NEAREST RESTAURANT, YOU SPOT WHAT APPEARS TO BE A GLOWING LIGHT IN THE DISTANCE. AFTER INCHING YOUR WAY CLOSER TOWARDS THE SOURCE, YOU COME TO REALIZE THAT THIS SOURCE OF GLOWING LIGHT IS JUST WHAT YOU NEED. IT IS THE LOCO IN THE COCO FOOD KIOSK.

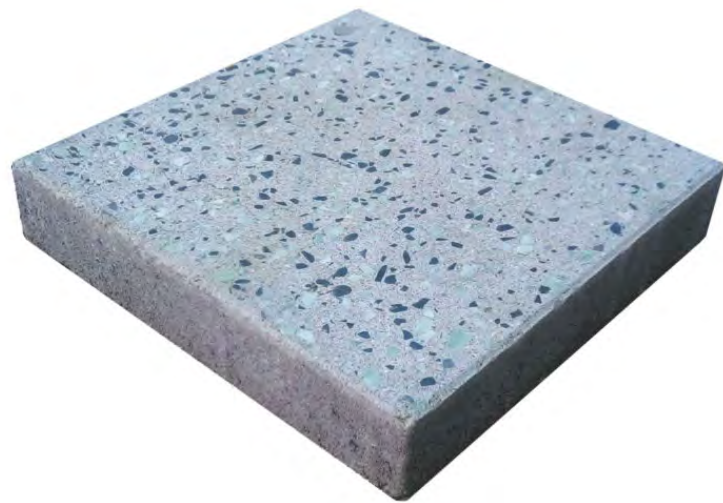
AT THE FOOD KIOSK, GUESTS BECOME REFRESHED AN ENERGIZED THROUGH THE BEVERAGES AND ASSORTED SNACKS THAT ARE PROVIDED. THEY CAN SIT AT SURROUNDING TABLES TO SOCIALIZE, EAT A SNACK, AND ENJOY THE LUSH NATURE THEY ARE SURROUNDED BY. DUE TO ITS ORGANIC AND NATURAL APPEARANCE, THE KIOSK IS ABLE TO PROVIDED FOOD AND BEVERAGES, WITHOUT INTERRUPTING THE TRANQUIL ATMOSPHERE IT IS ENGULFED BY.





# Technology

GLOW PATH TECHNOLOGY -  
AGGREGATES OF ROCK THAT  
HAVE BEEN INTEGRATED INTO  
ASPHALT, CONCRETE, AND  
OTHER MATERIALS



# Technology

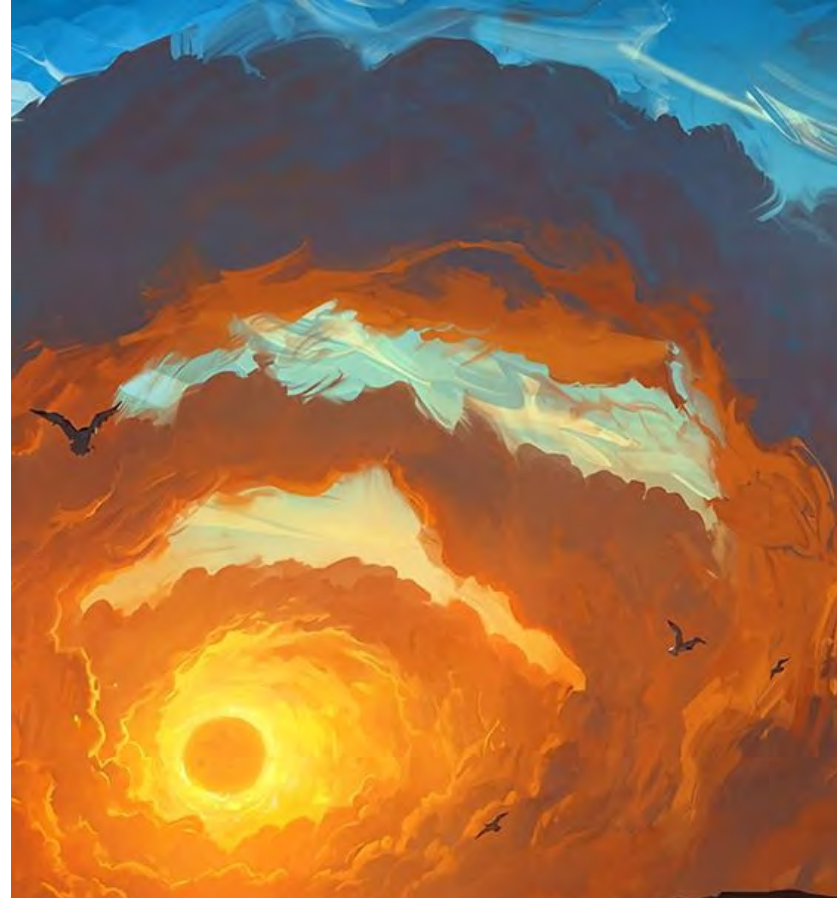
LAVA LAMP LIGHTING - THE PHYSICS AND CHEMISTRY BETWEEN WAX, WATER, HEAT, LIGHT, AND OTHER FACTORS WORK TOGETHER TO PRODUCE THE ICON LAVA LAMP WE KNOW AND LOVE TODAY













# The Menu – Drinks



PINA COLADA SMOOTHIE



HIBISCUS TEA



WATER



GREEN TEA

# The Menu – Snacks

\*\*\*THESE WILL BE PRE-PACKAGED/PREPARED SNACKS THAT  
ARE SHIPPED FROM LOCAL SOURCES



CHIPS



POPSICLES



GRANOLA BARS



MACADAMIA NUTS



# Equipment/Calculations



150 MEALS PER HOUR - 1 MEAL = 1 DRINK AND 1 SNACK

1 SMOOTHIE = 12 OZ      1 BLENDER = 60 OZ

60 OZ / 12OZ = 5 SMOOTHIES

IT TAKES 2 MINUTES FOR 1 BLENDER TO MAKE 5 SMOOTHIES

60 MINUTES IN AN HOUR / 2 MINUTES PER SMOOTHIE = 30 BATCHES

5 SMOOTHIES X 30 BATCHES IN 1 HOUR = 150 SMOOTHIES PER HOUR

\*\*\*THEREFORE, WHILE ONE BLENDER IS NEEDED, 2 WILL BE INSTALLED IN THE EVENT ONE OF THE BLENDERS MALFUNCTIONS.

Specifications	
Configuration and Overview	
BASE MATERIAL	Die Cast
DRIVE SYSTEM	Metal Coupler
JAR SIZE	90
NUMBER OF SPEEDS	9.0
Details	
CLEANING CYCLE	No
JAR SIZE MARKED	60
BLADE DESIGN	Stainless Steel
JAR MATERIAL	BPA Free
JAR STYLE	Square, Single-Wall Jar
SOFT START®	Yes
INTELLI-SPEED® MOTOR CONTROL	Yes
PULSE	Yes

# Equipment/Calculations

150 MEALS PER HOUR - 1 MEAL = 1 DRINK  
AND 1 SNACK

1 SERVING OF TEA = 12 OZ

1 GALLON = 128 OZ

1 TEA TRUNK HOLDS 3 GALLONS

128 OZ X 3 GALLONS = 384 OZ

384 OZ / 12 OZ PER SERVING = 32 CUPS

150 MPH / 32 CUPS = 5 TRUNKS





# Equipment/Calculations

150 MEALS PER HOUR - 1 MEAL = 1 DRINK AND 1 SNACK

REFRIGERATOR = 18.7 CUBIC FEET

FREEZER = 11.7 CUBIC FEET

12 IN = 1 FT

12 IN X 12IN X 12 IN = 1728 CUBIC INCHES

1728 CUBIC IN X 11.7 CUBIC FT = 20,217.6 CUBIC IN

1 POPSICLE = 5 IN X 8 IN X 1 IN = 40 CUBIC IN

20,217.6 CUBIC IN / 40 CUBIC IN = 505 POPSICLES



48" PRO  
Refrigerator/Freezer with  
Glass Door

Model # PRO4850G

MSRP \$18,235

[See model options](#)

[Download reference guide](#) 

ADD TO MY FAVORITES 

# Remaining Equipment



- Made of high-grade heavy duty 304 corrosion resistant stainless steel
- Adjustable 1 1/2 bullet feet for the best possible stability
- Right Side 12-inch drainboards
- Rolled edges to prevent overflow
- Rounded corners for easy cleaning
- Protective backsplash to prevent splashes
- Slanted drainboard surface to drain excess water
- Stainless steel leg sockets
- Corrosion resistant galvanized steel legs
- Made from 18 Gauge stainless steel
- Pre-punched 1.2" holes to fit standard size faucets (faucets not included)
- Stainless steel drain basket included
- Can be used for food prep, food thaw, utility sink or to rinse dishes
- Quick and simple set up and installation
- NSF certified
- 1 Year warranty



# Remaining Equipment

## FEATURES / BENEFITS

- One-at-a-time dispensing of cups & cold beverage lids
- Straw option available
- No "wear parts" to replace
- Easy-to-adjust Lifetime Levers™ prevent marring of cups
- Dispenses paper, plastic or foam cups
- NSF Certified
- Black polystyrene construction



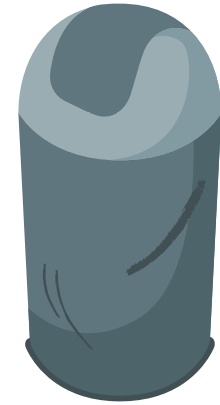
# Operational Flow Analysis



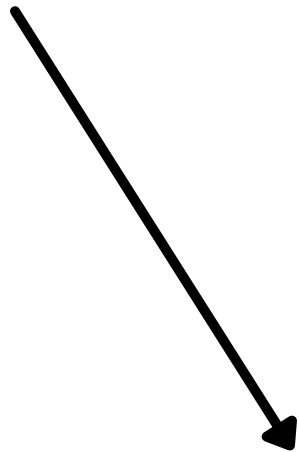
FOOD AND SUPPLIES GET  
DELIVERED TO KIOSK



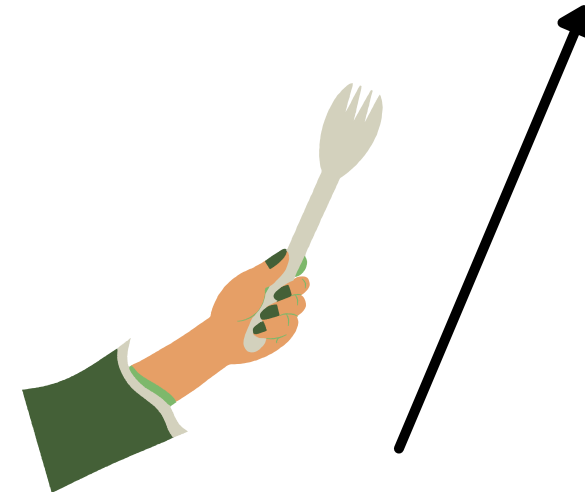
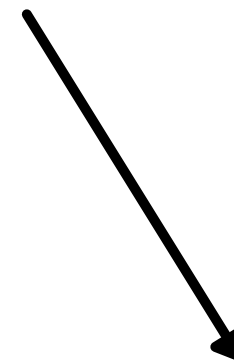
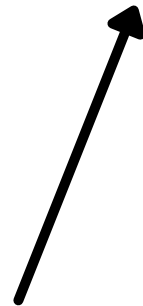
DRINKS ARE PREPARED AHEAD OF  
TIME AND ARE MADE AS NEEDED.  
PRE-PACKAGED/PREPARED FOOD  
IS PUT ON DISPLAY OF IN EASILY  
ACCESSIBLE LOCATIONS.



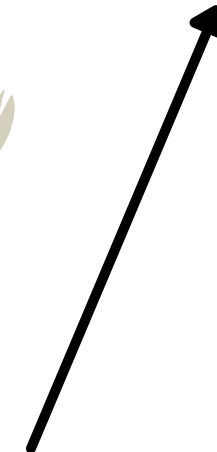
TRASH FROM THE PRODUCTS  
IS DISPOSED OF



FOOD AND SUPPLIES ARE PLACED  
INTO STORAGE. STORAGE INCLUDES  
A REFRIGERATOR, FREEZER,  
CABINETS AND/OR BASKETS, FOOD  
DISPLAYS, CUP, UTENSIL AND  
NAPKIN DISPENSERS



FOOD AND BEVERAGES  
ARE PAID FOR BY  
CUSTOMER AND ARE  
CONSUMED





# Guest Use and Flow Analysis



GUESTS DRIVE TO HAWAII  
VOLCANO NATIONAL PARK



GUESTS WALK UP TO THE  
COUNTER AND PURCHASE THE  
DRINKS AND SNACKS THEY DESIRE



GUESTS DISPOSE OF ANY  
TRASH BEFORE RETURNING TO  
HIKING OR OTHER DAILY  
ACTIVITIES.



GUESTS HIKE AND EXPLORE THE  
PARK. AFTER USING MOST OF THEIR  
ENERGY THEY MAKE THEIR WAY TO  
THE KIOSK FOR A BREAK



THE GUESTS CONSUME  
THE FOOD AND  
BEVERAGES THEY PAID  
FOR.

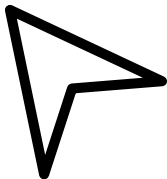
# Bubble Diagram



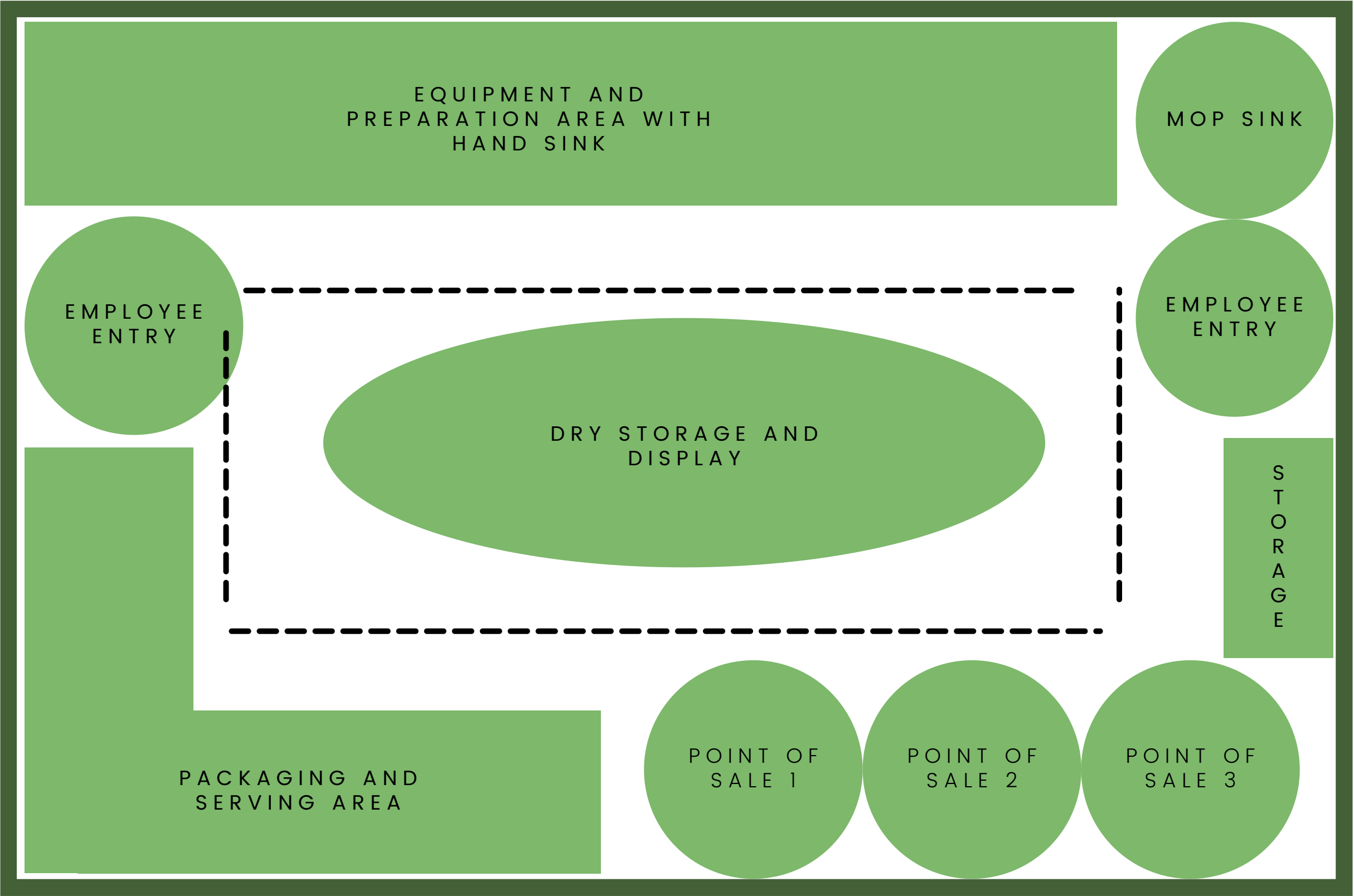
DEDICATED  
AREA



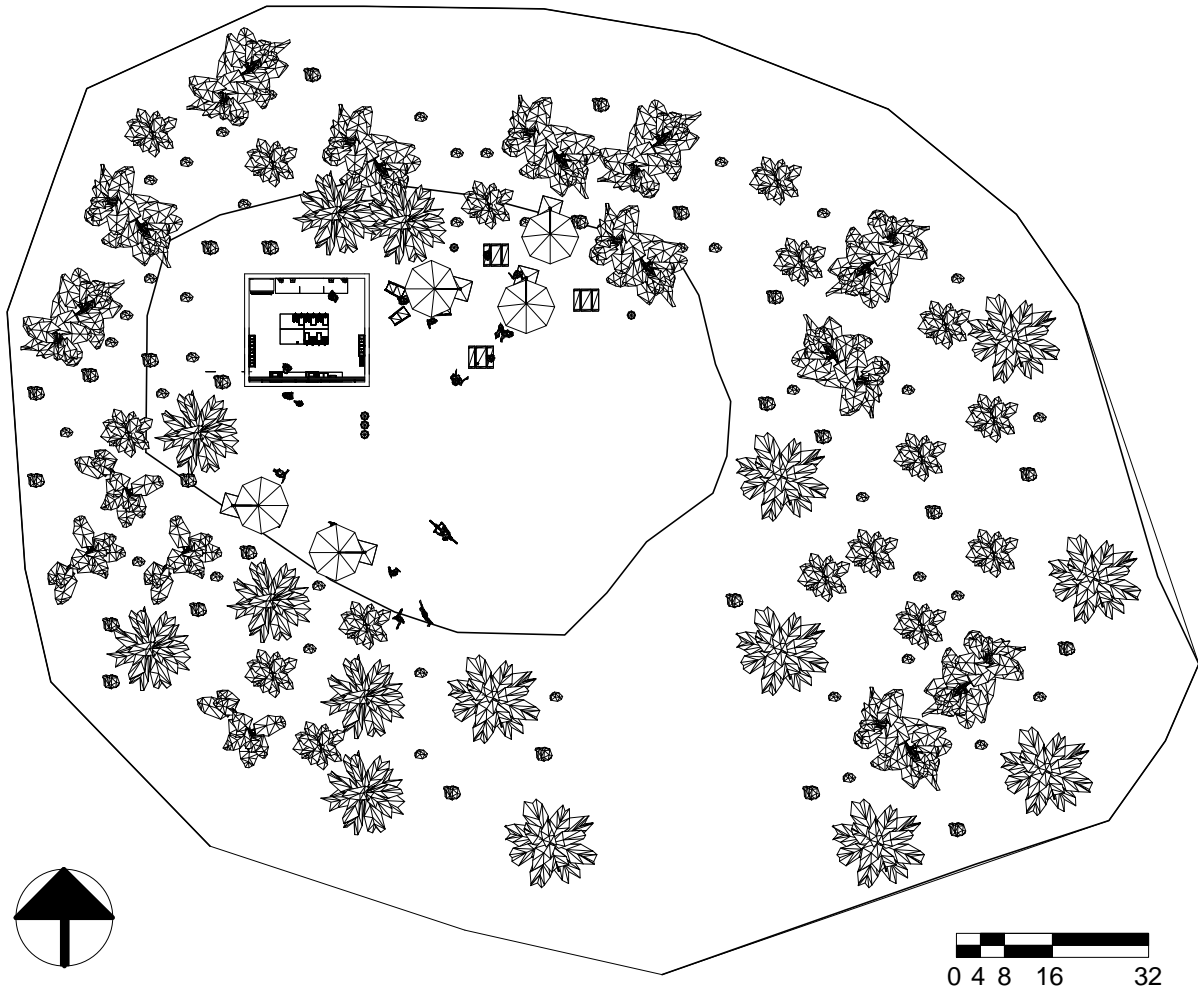
CIRCULATION



NORTH







Cara Harlow  
Designs

Cara Harlow  
Loco in the Coco

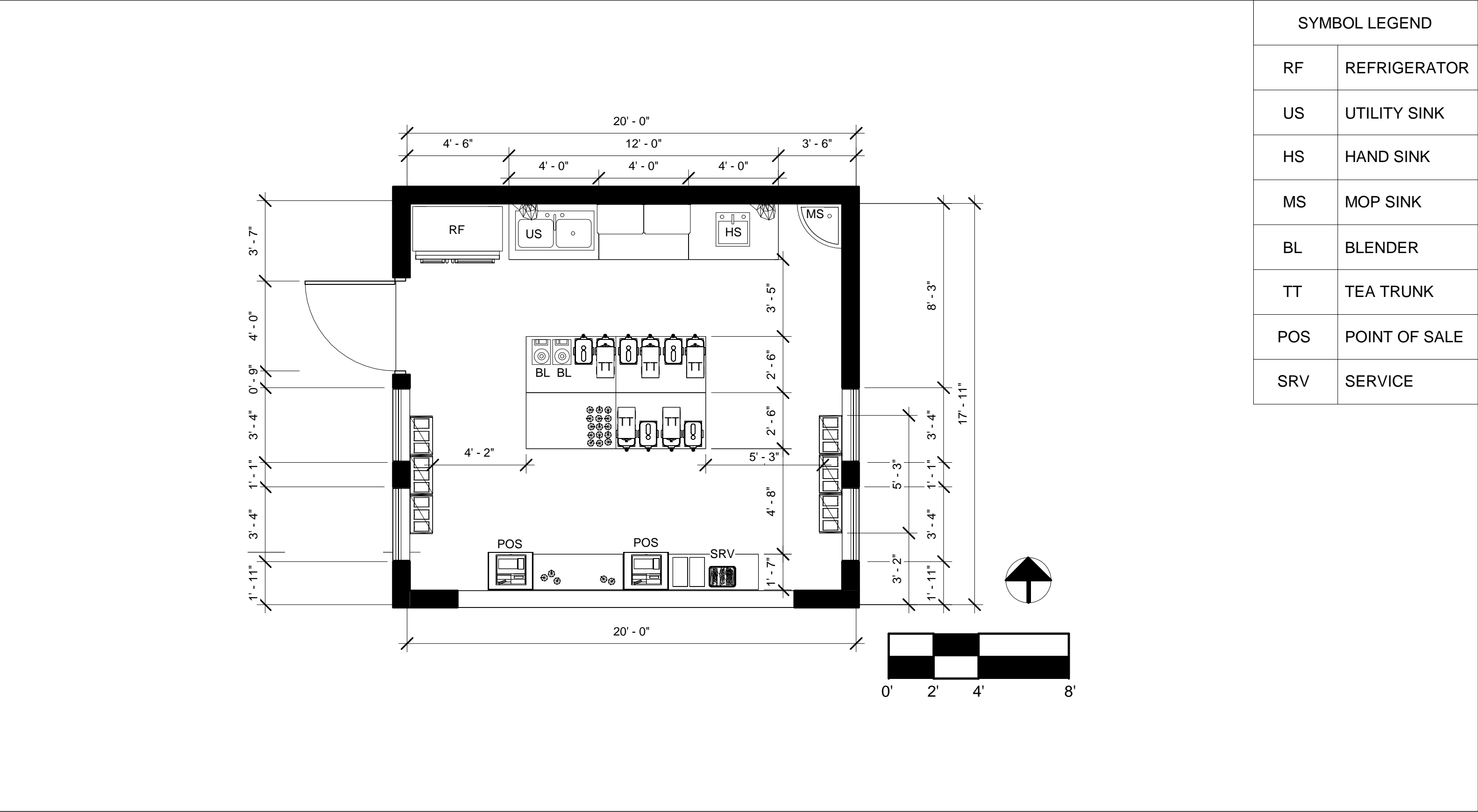
No.	Description	Date

Site Plan

Project number	202130
Date	04.09.2021
Drawn by	Cara Harlow
Checked by	Bob Shreve

ID 1.0

Scale 1/32" = 1'-0"





Cara Harlow  
Designs

Cara Harlow  
Loco in the Coco

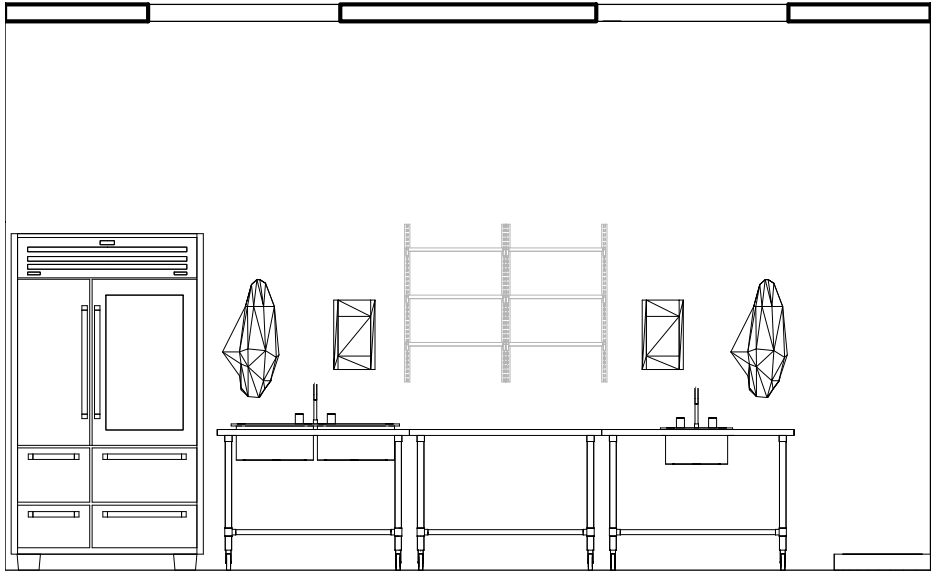
No.	Description	Date

Floor Plan

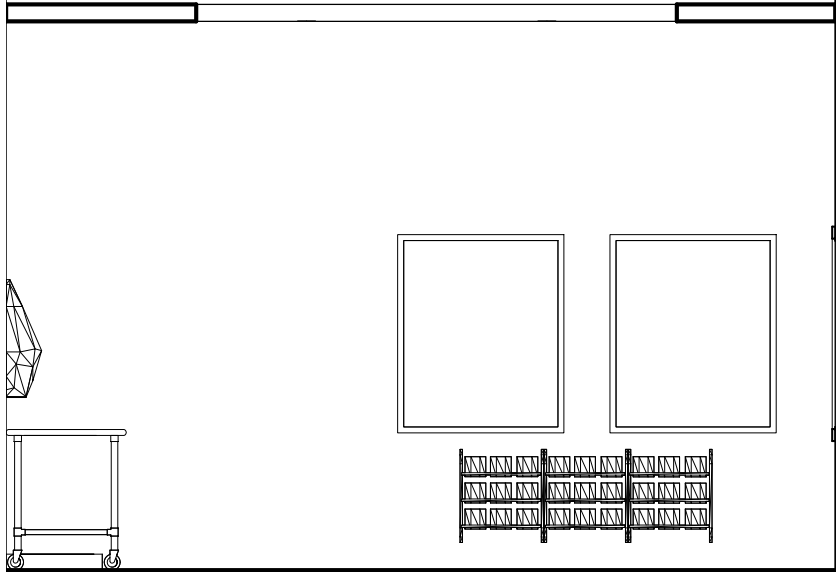
Project number202130  
Date04.09.2021  
Drawn byCara Harlow  
Checked byBob Shreve

ID 2.0  
Scale 1/4" = 1'-0"

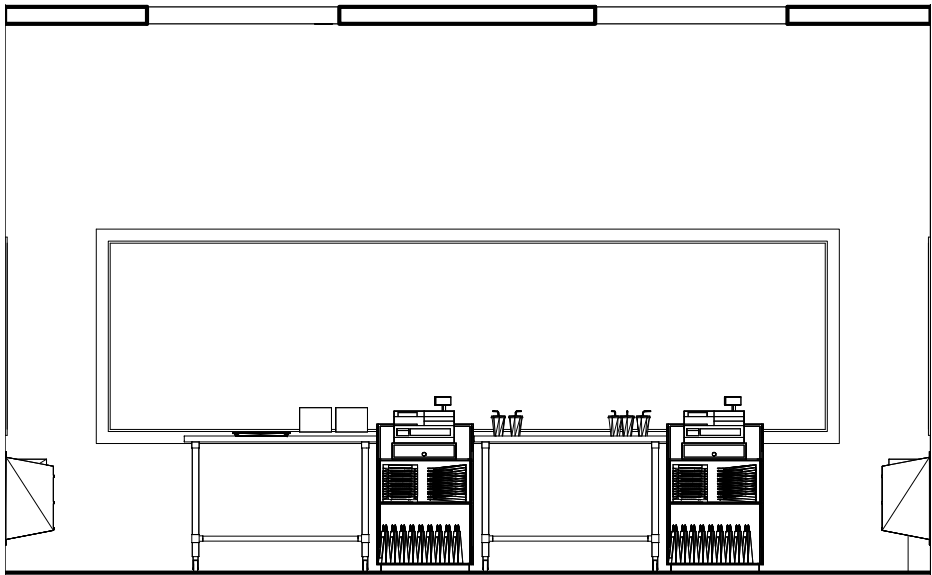




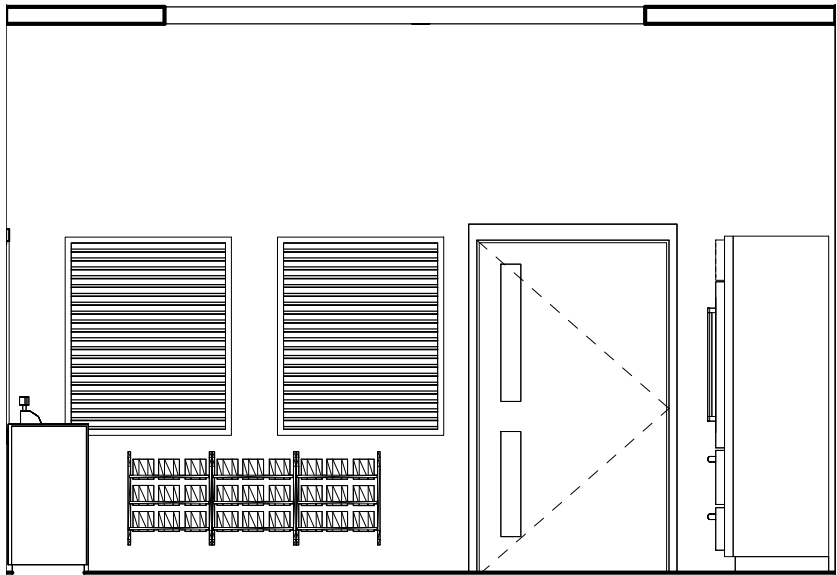
1 North Wall Interior Elevation  
1/4" = 1'-0"



2 East Wall Interior Elevation  
1/4" = 1'-0"



3 South Wall Interior Elevation  
1/4" = 1'-0"



4 West Wall Interior Elevation  
1/4" = 1'-0"



Cara Harlow  
Designs

Cara Harlow  
Loco in the Coco

No.	Description	Date

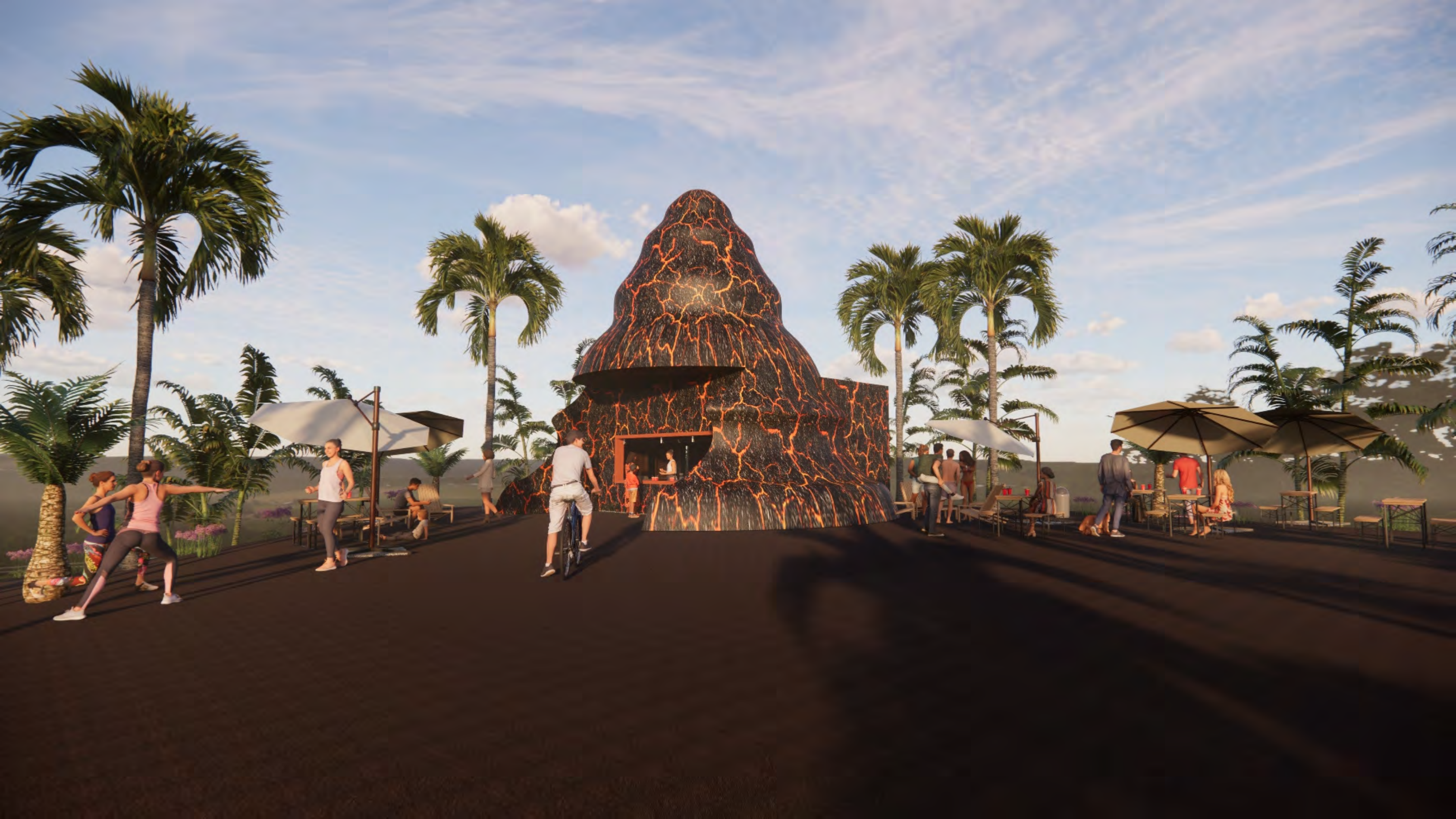
Interior Elevations

Project number 202130  
Date 04.09.2021  
Drawn by Cara Harlow  
Checked by Bob Shreve

ID 3.0

Scale 1/4" = 1'-0"



















# Work Cited

[HTTPS://AMBIENTGLOWTECHNOLOGY.COM/](https://ambientglowtechnology.com/)

[HTTPS://THEGLOWPATH.COM/](https://theglowpath.com/)

[HTTPS://WWW.NPS.GOV/HAVO/INDEX.HTM](https://www.nps.gov/havo/index.htm)

[HTTPS://WWW.FORBES.COM/SITES/DAVIDBRESSAN/2017/02/07/HAWAIIAN-MYTHS-TELL-A-STORY-ABOUT-VOLCANIC-ACTIVITY-AT-KILAUEA/?SH=34F4260C26CA](https://www.forbes.com/sites/DAVIDBRESSAN/2017/02/07/HAWAIIAN-MYTHS-TELL-A-STORY-ABOUT-VOLCANIC-ACTIVITY-AT-KILAUEA/?SH=34F4260C26CA)

[HTTPS://WWW.SMITHSONIANMAG.COM/ARTS-CULTURE/THE-HISTORY-OF-THE-LAVA-LAMP-21201966/](https://www.smithsonianmag.com/arts-culture/the-history-of-the-lava-lamp-21201966/)

[HTTPS://SCHYLLING.COM/BRAND/LAVA/](https://schylling.com/brand/lava/)

[HTTPS://WWW.KITCHENAID.COM/COUNTERTOP-APPLIANCES/BLENDERS/BLENDER-PRODUCTS/P.HIGH-PERFORMANCE-SERIES-BLENDER.KSB6060BM.HTML](https://www.kitchenaid.com/countertop-appliances/blenders/blender-products/p.high-performance-series-blender.ksb6060bm.html)

[HTTPS://WWW.SUBZERO-WOLF.COM/SUB-ZERO/FULL-SIZE-REFRIGERATION/REFRIGERATION/PRO4850G](https://www.subzero-wolf.com/sub-zero/full-size-refrigeration/refrigeration/pro4850g)

[HTTPS://COMMERCIAL.BUNN.COM/36700.0300](https://commercial.bunn.com/36700.0300)

[HTTPS://WWW.SANJAMAR.COM/PRODUCT-CATEGORIES/COUNTERSERVICE/COUNTERSERVICE-DISPENSING/](https://www.sanjamar.com/product-categories/counterservice/counterservice-dispensing/)

[HTTPS://KOOLMORE.COM/COLLECTIONS/TWO-COMPARTMENT-SINKS/PRODUCTS/SB141611-12B3](https://koolmore.com/collections/two-compartment-sinks/products/sb141611-12b3)